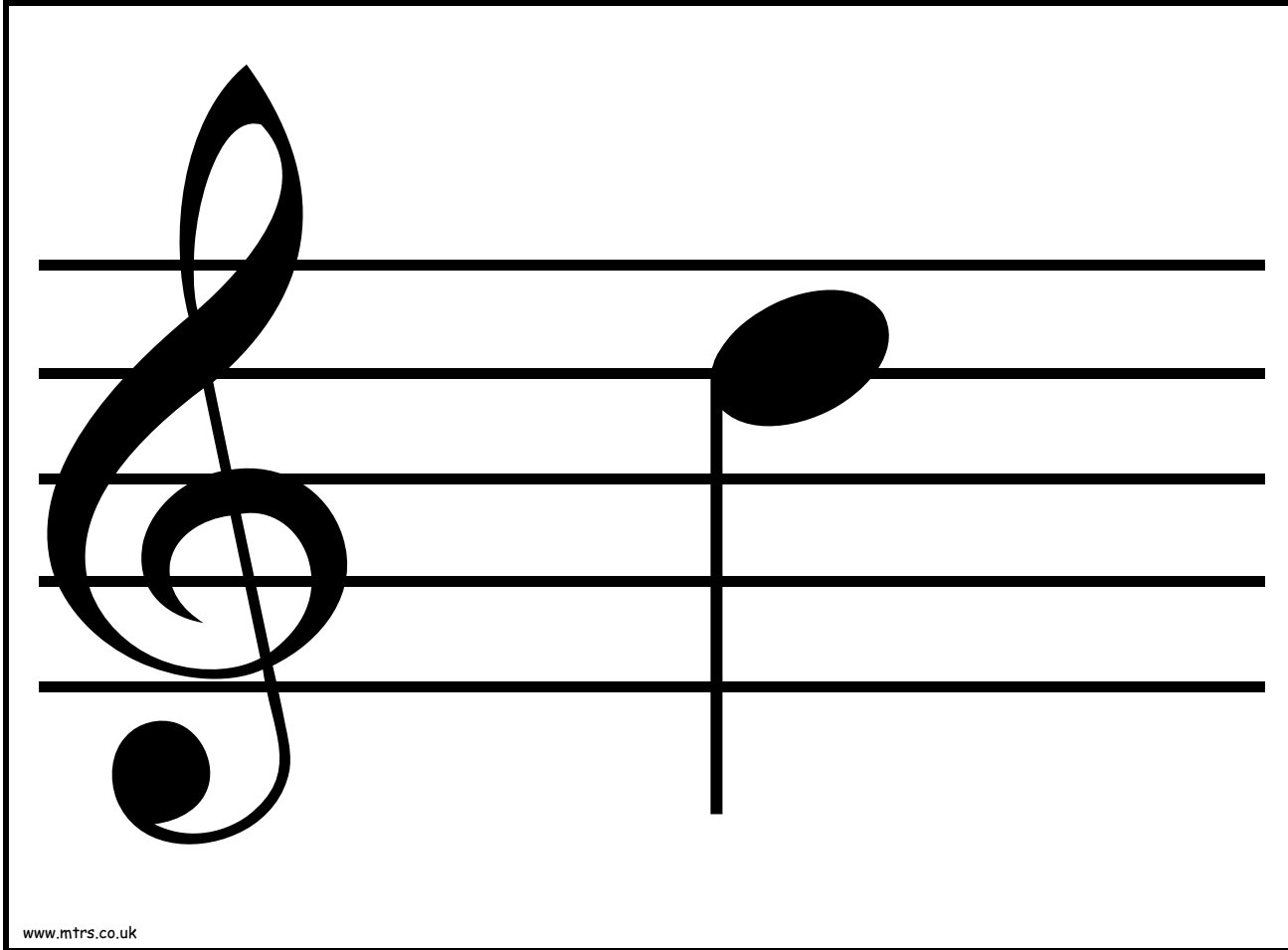
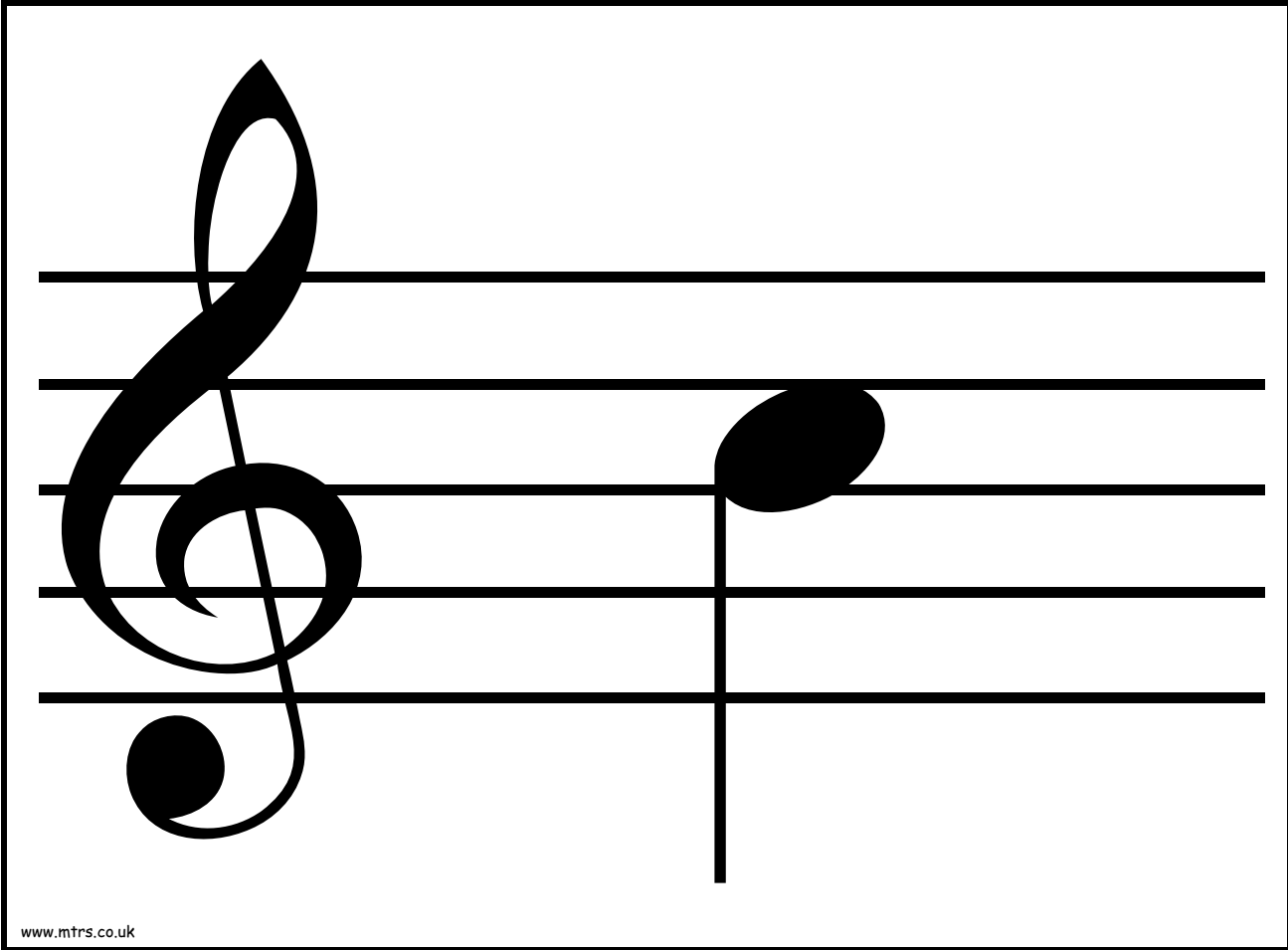


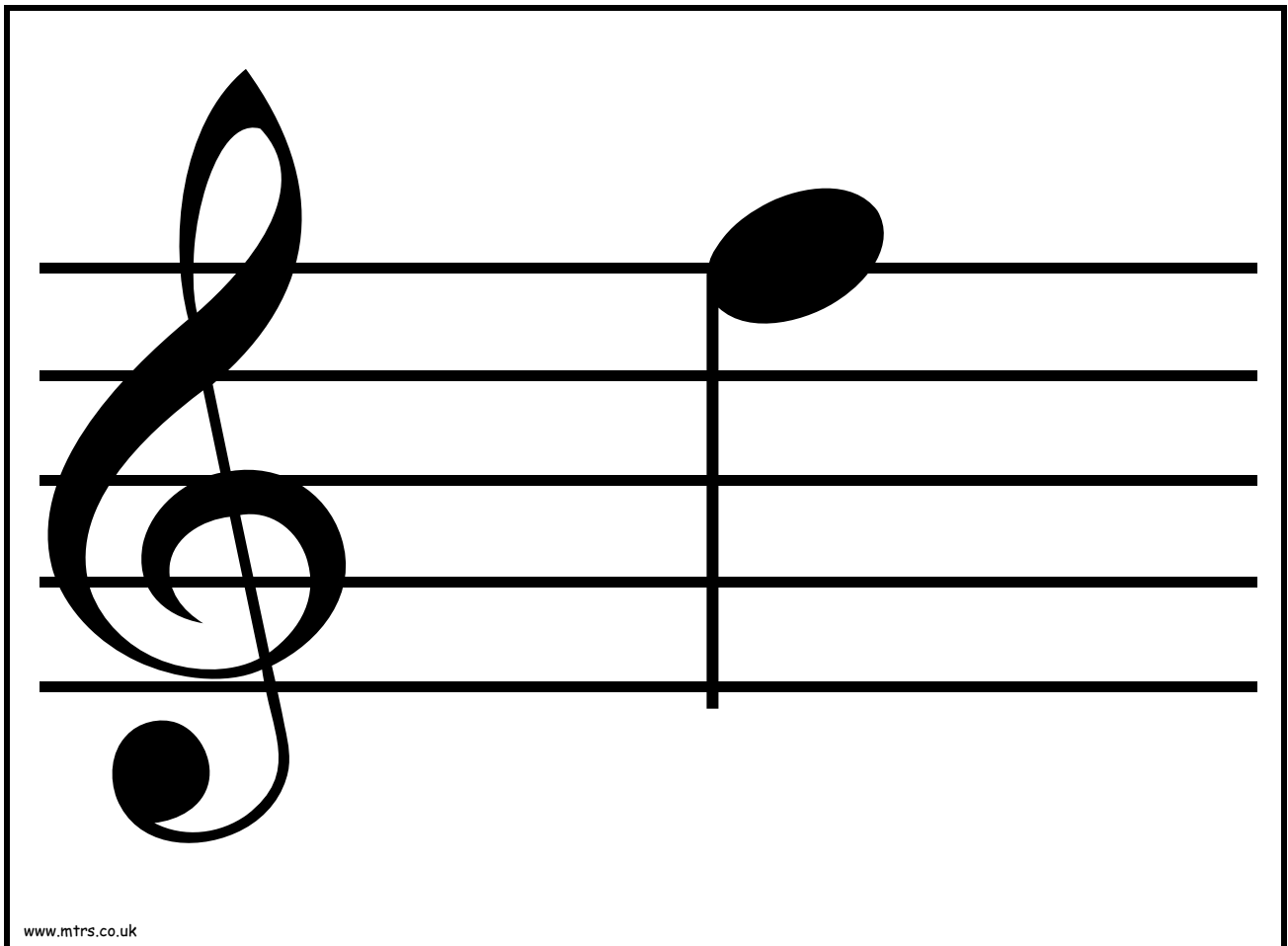
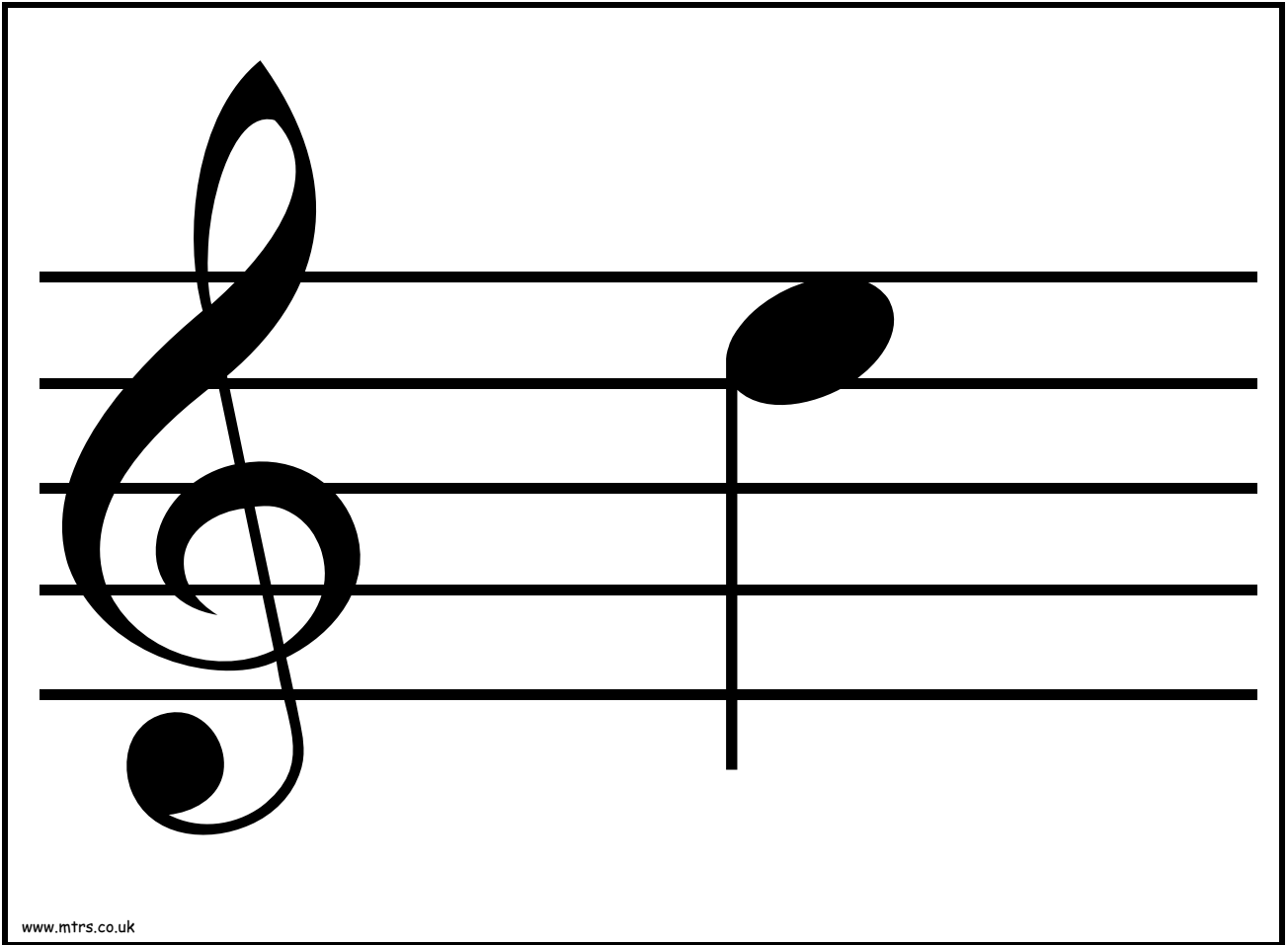
A musical staff with five horizontal lines. On the left side, there is a treble clef. On the right side, there is a single note with a solid black oval head and a vertical stem extending upwards to the top line of the staff.

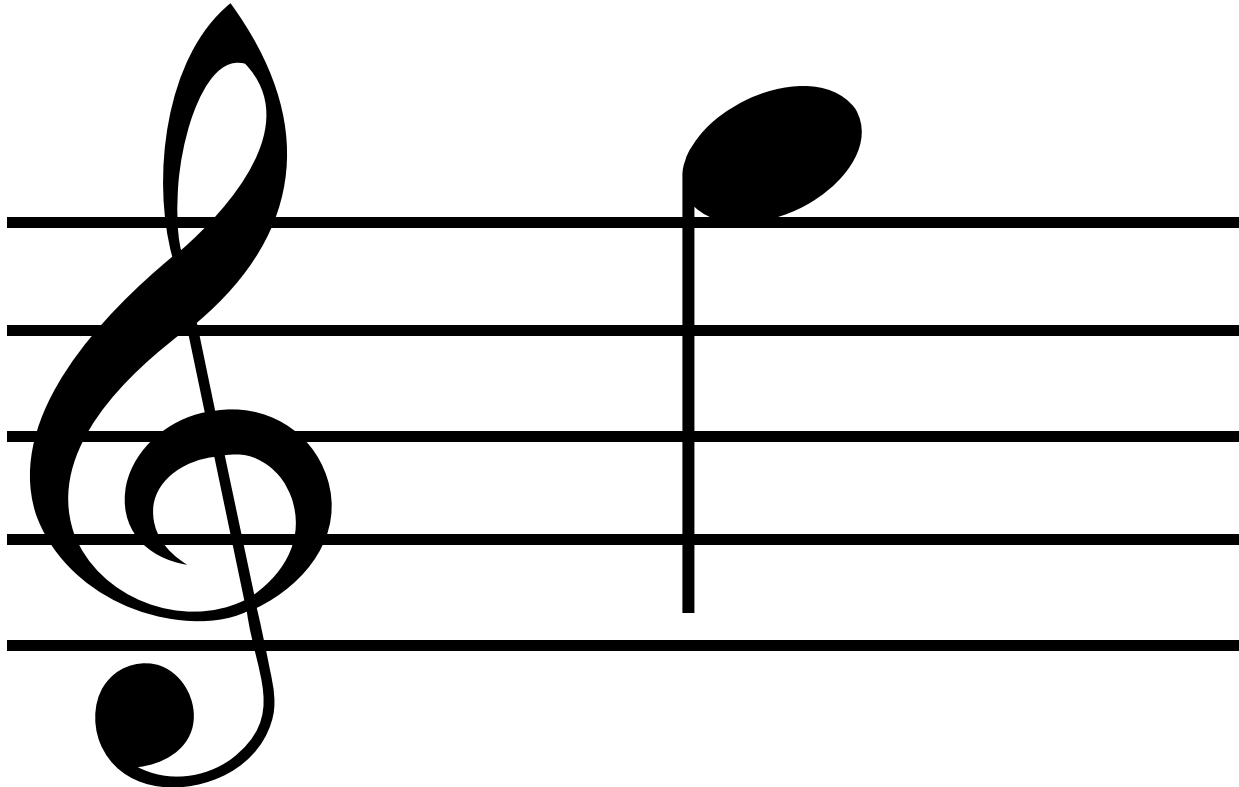
www.mtrs.co.uk

A musical staff with five horizontal lines. On the left side, there is a treble clef. On the right side, there is a single note with a solid black oval head and a vertical stem extending upwards to the top line of the staff.

www.mtrs.co.uk

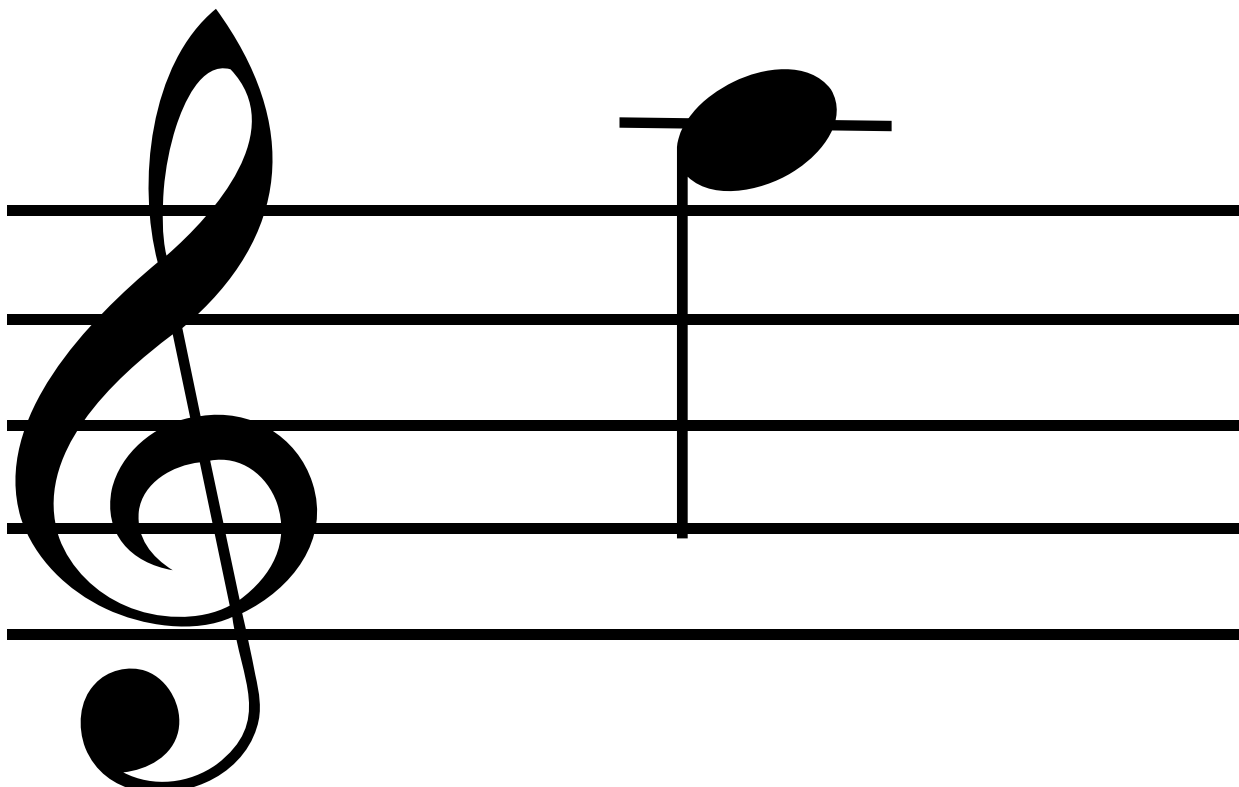






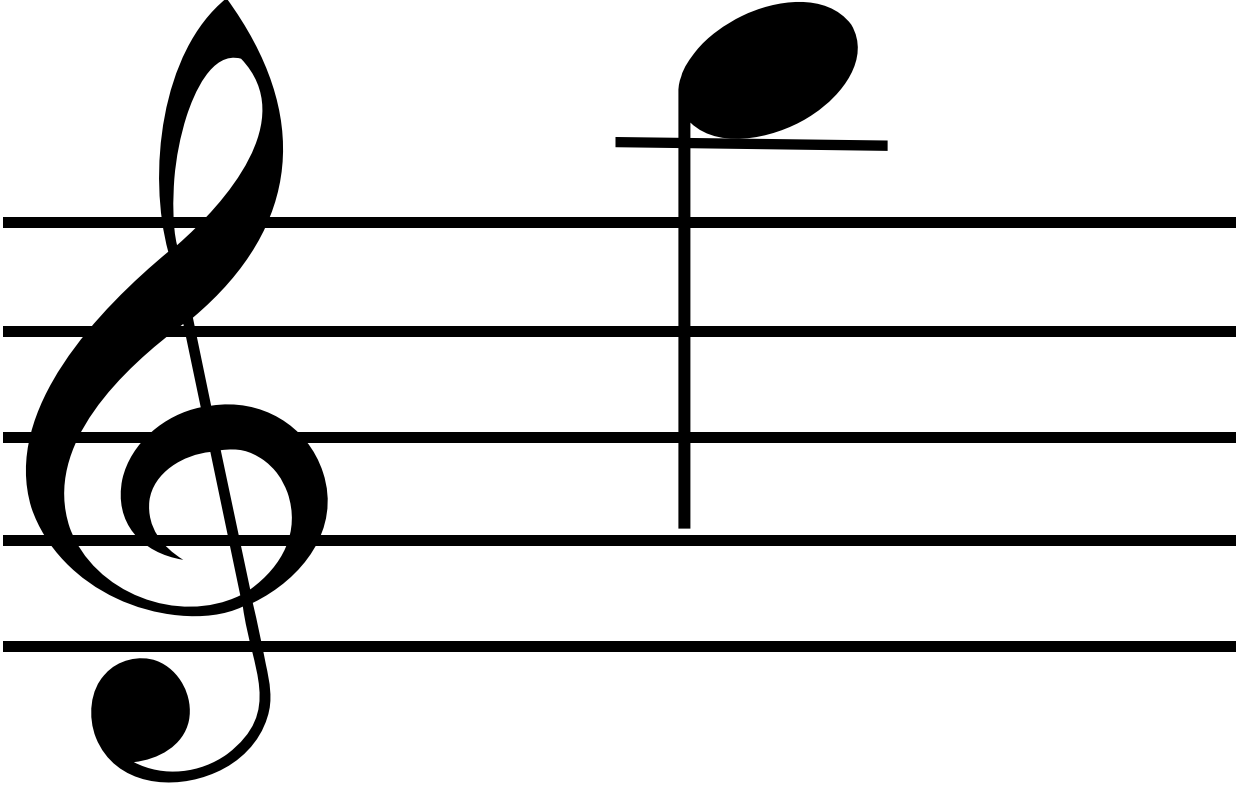
A musical staff with five horizontal lines. On the left side, there is a treble clef. On the right side, there is a single note. The note consists of a vertical stem that starts from the second line from the bottom and goes up to the top line. At the top of the stem is an oval-shaped note head.

www.mtrs.co.uk



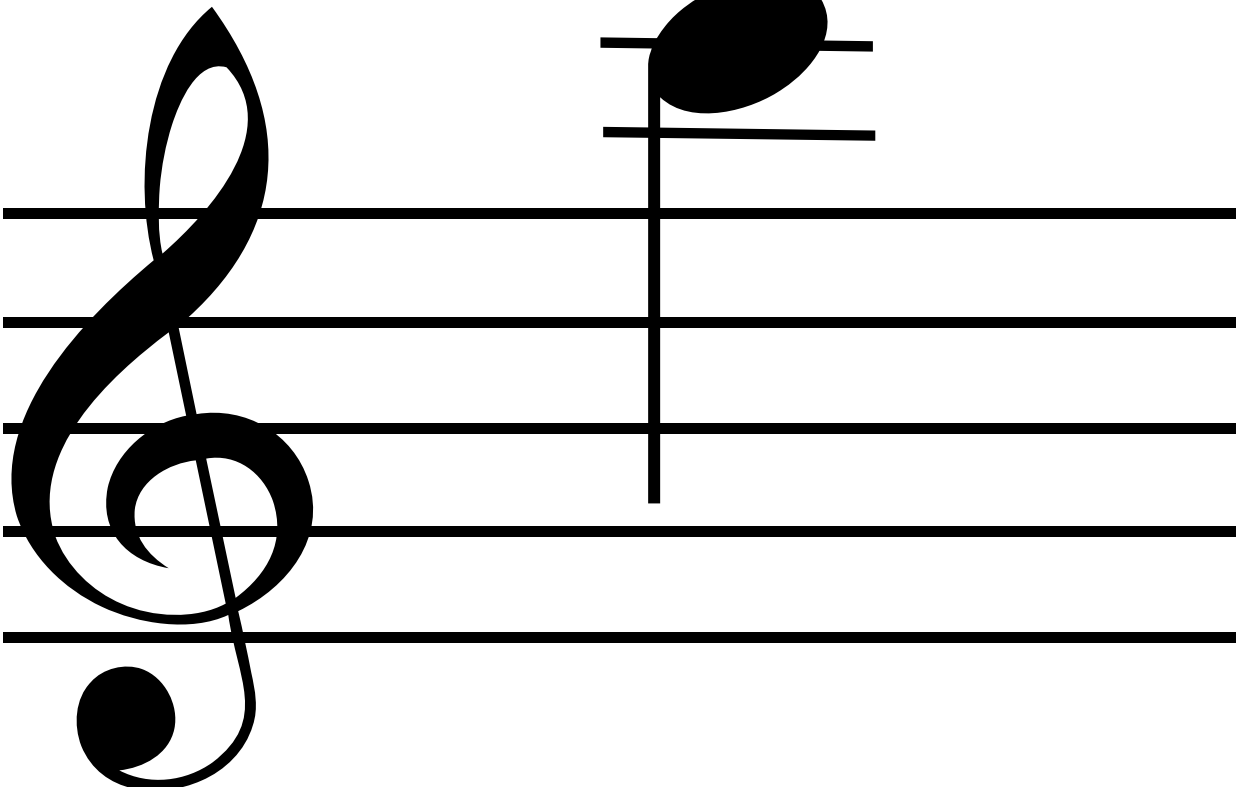
A musical staff with five horizontal lines. On the left side, there is a treble clef. On the right side, there is a single note. The note consists of a vertical stem that starts from the second line from the bottom and goes up to the top line. At the top of the stem is an oval-shaped note head. A horizontal line (beam) extends from the left side of the note head to the right.

www.mtrs.co.uk



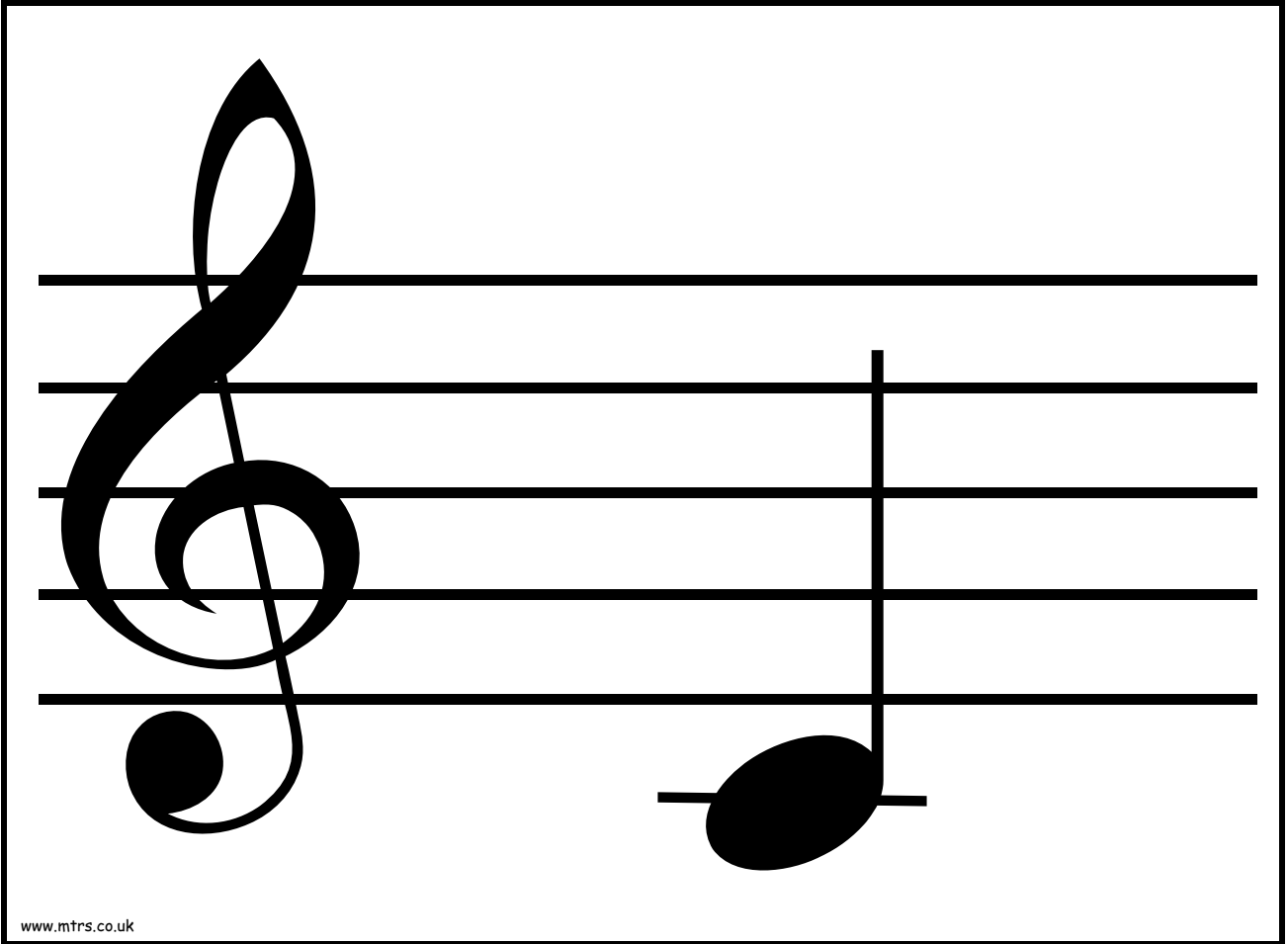
A musical staff with five horizontal lines and a treble clef on the left. A single note is positioned on the second line from the bottom. The note consists of a vertical stem extending from the second line down to the first line, and an oval-shaped head pointing to the right, centered on the second line.

www.mtrs.co.uk

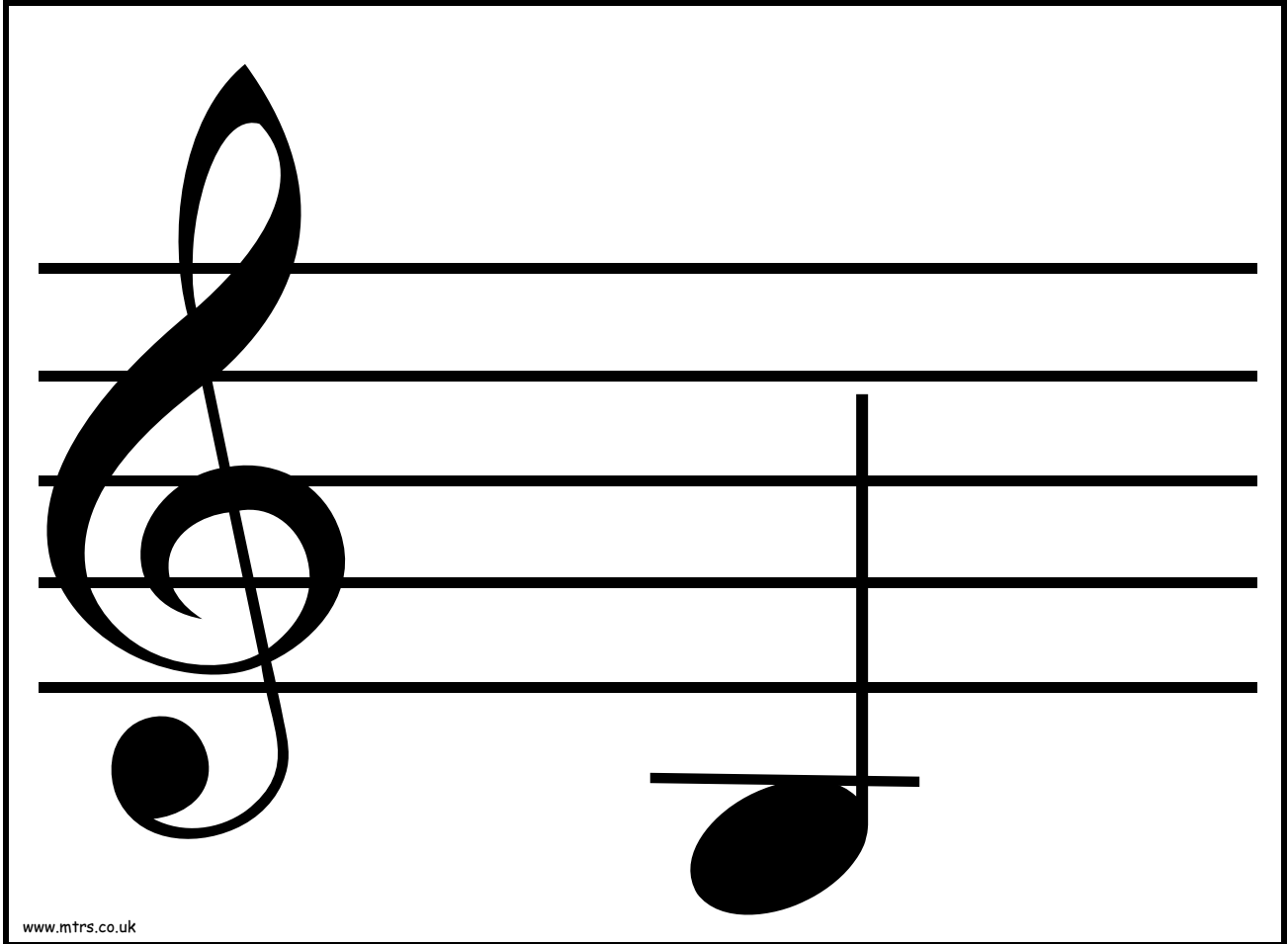


A musical staff with five horizontal lines and a treble clef on the left. A single note is positioned on the second line from the bottom. The note consists of a vertical stem extending from the second line down to the first line, and an oval-shaped head pointing to the right, centered on the second line.

www.mtrs.co.uk



www.mtrs.co.uk



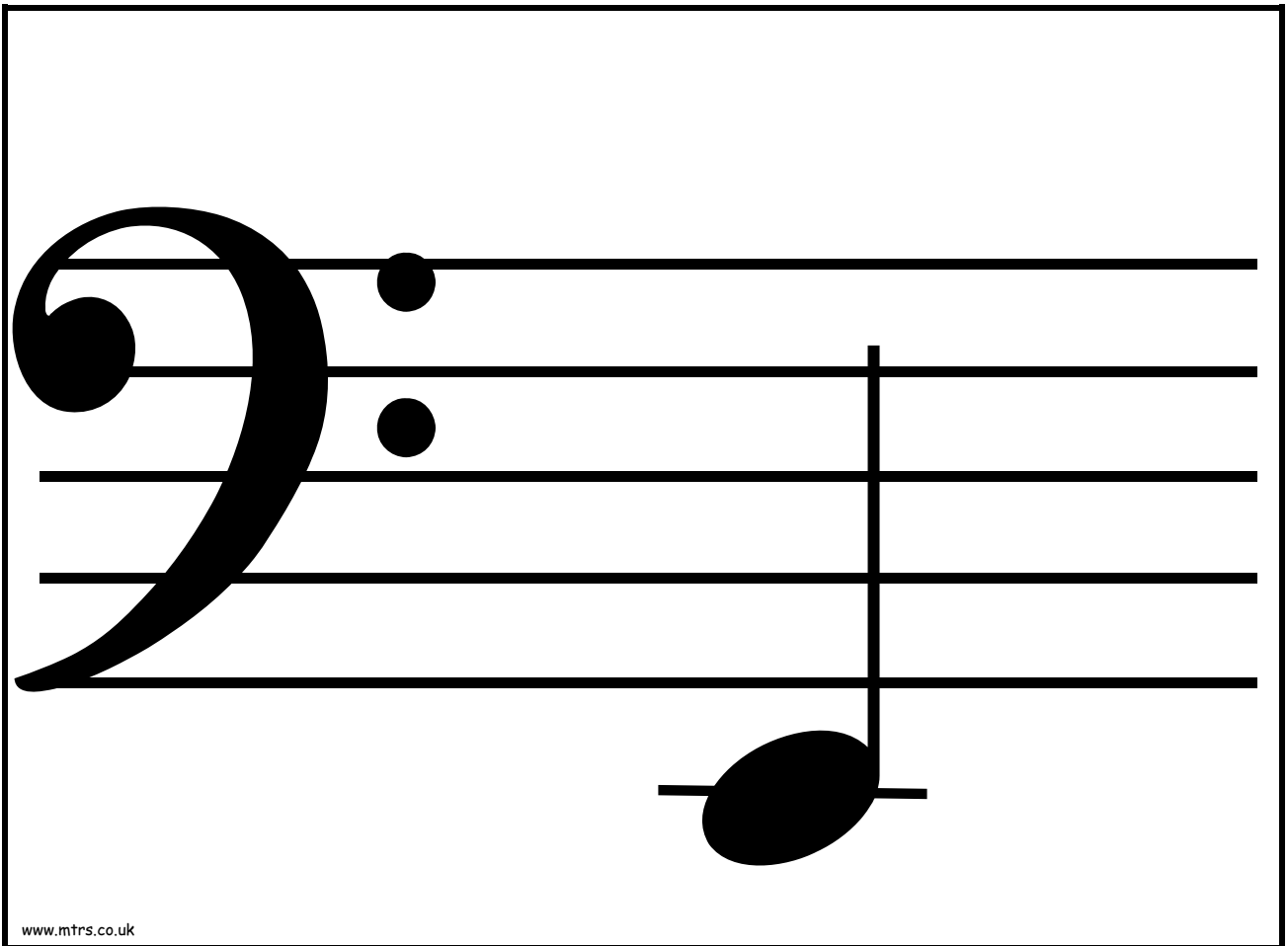
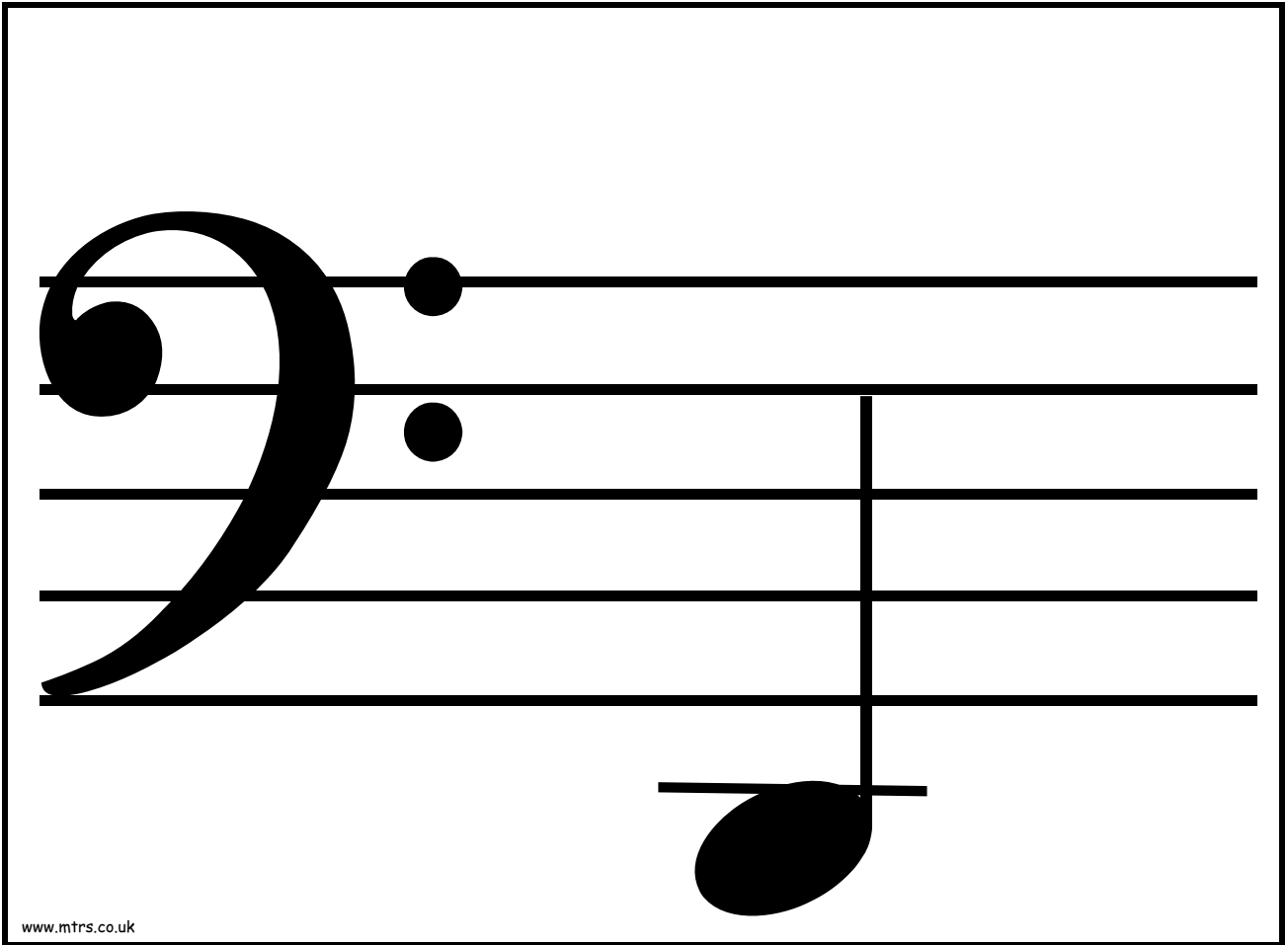
www.mtrs.co.uk

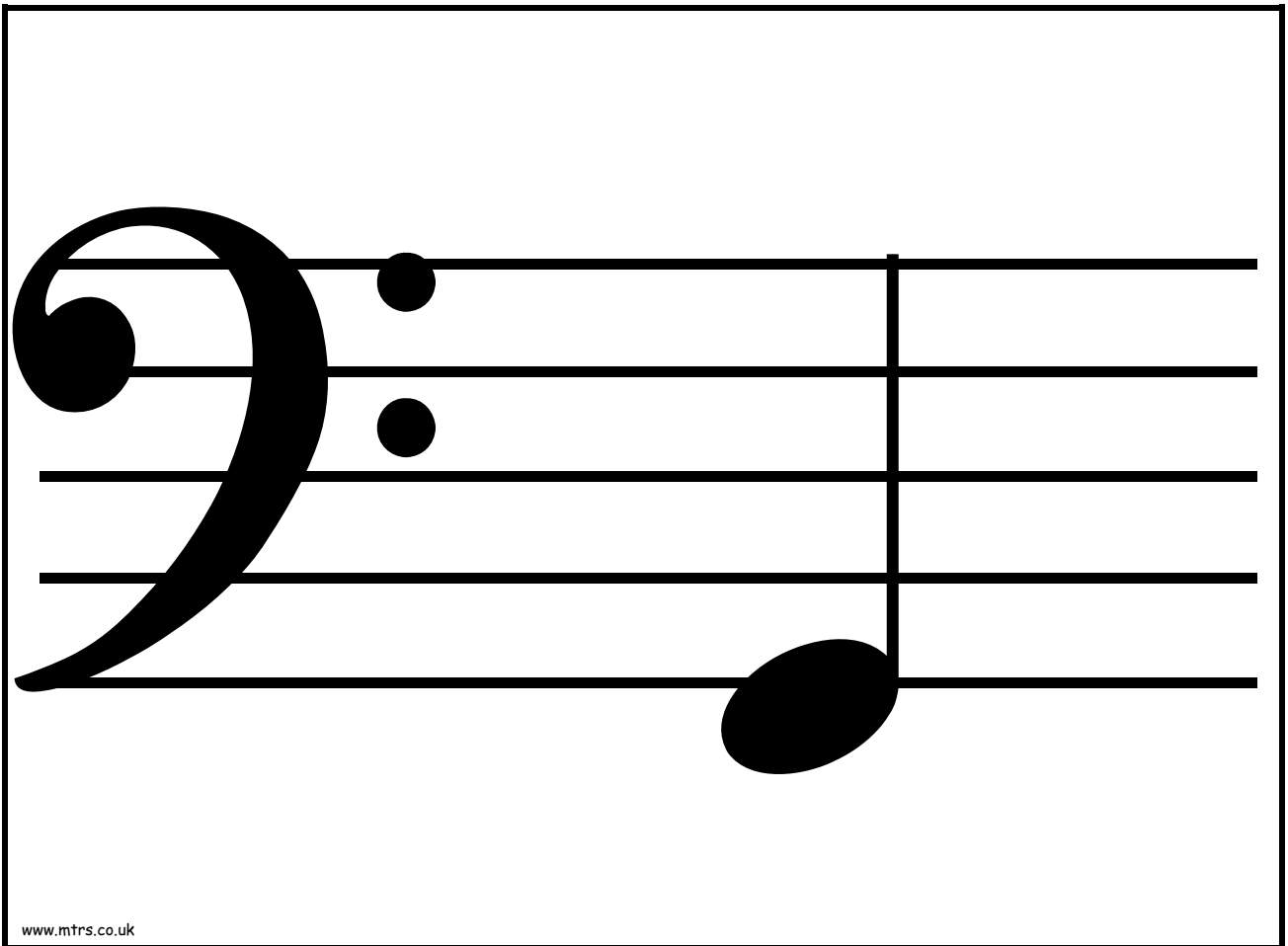
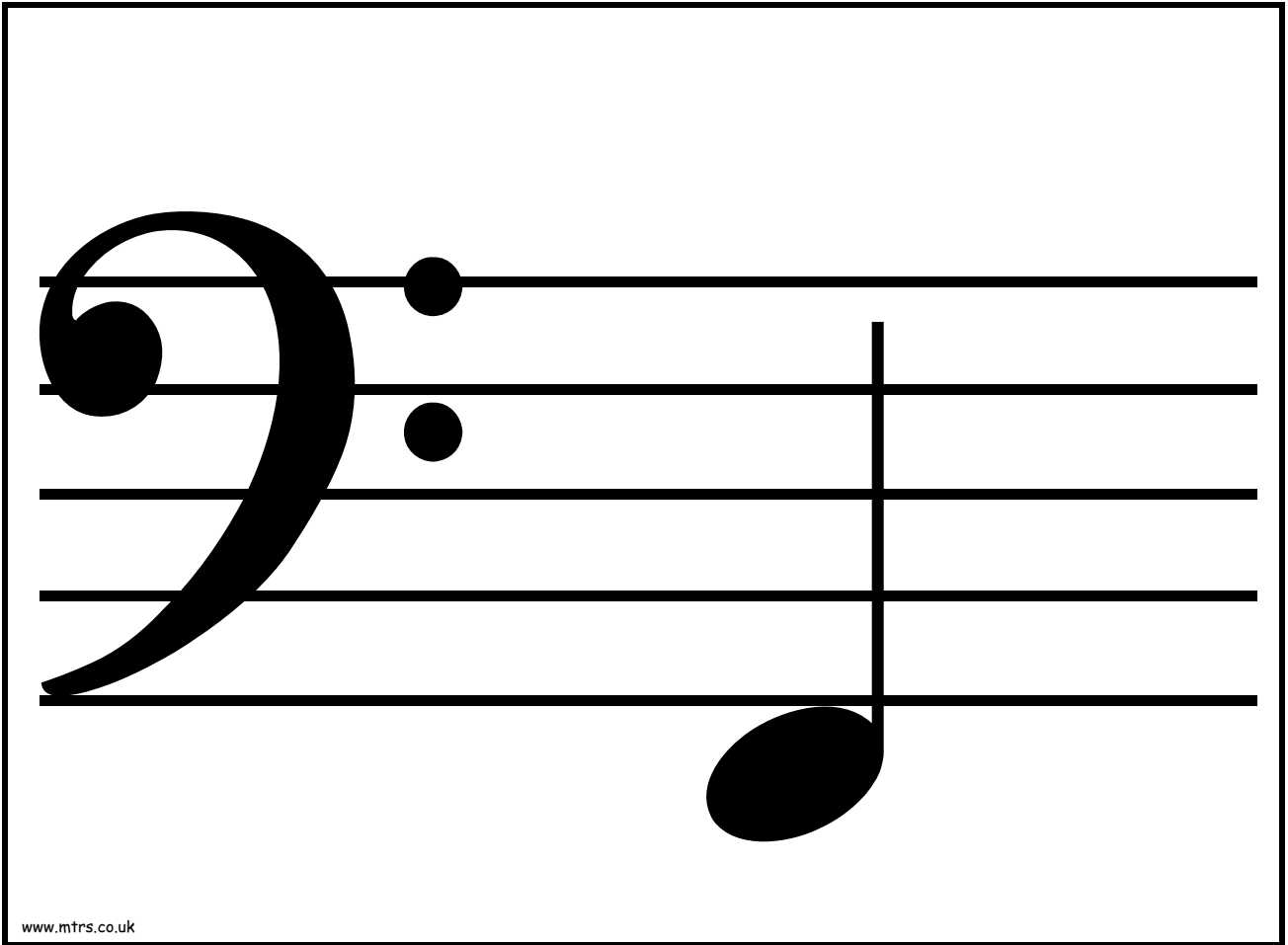
A musical staff with five horizontal lines. On the left side, there is a large black treble clef. On the right side, there is a single black note with a vertical stem and a horizontal bar across the second and third lines from the bottom. The note head is an oval shape.

www.mtrs.co.uk

A musical staff with five horizontal lines. On the left side, there is a large black bass clef. On the right side, there is a single black note with a vertical stem and a horizontal bar across the second and third lines from the bottom. The note head is an oval shape.

www.mtrs.co.uk





A musical staff with five horizontal lines. On the left, there is a large, black bass clef. To the right of the clef, there are two solid black dots: one on the second line from the top and one on the second line from the bottom. Further to the right, there is a vertical bar line. To the right of the bar line, there is a solid black oval note on the bottom line.

www.mtrs.co.uk

A musical staff with five horizontal lines. On the left, there is a large, black bass clef. To the right of the clef, there are two solid black dots: one on the second line from the top and one on the second line from the bottom. Further to the right, there is a vertical bar line. To the right of the bar line, there is a solid black oval note on the bottom line.

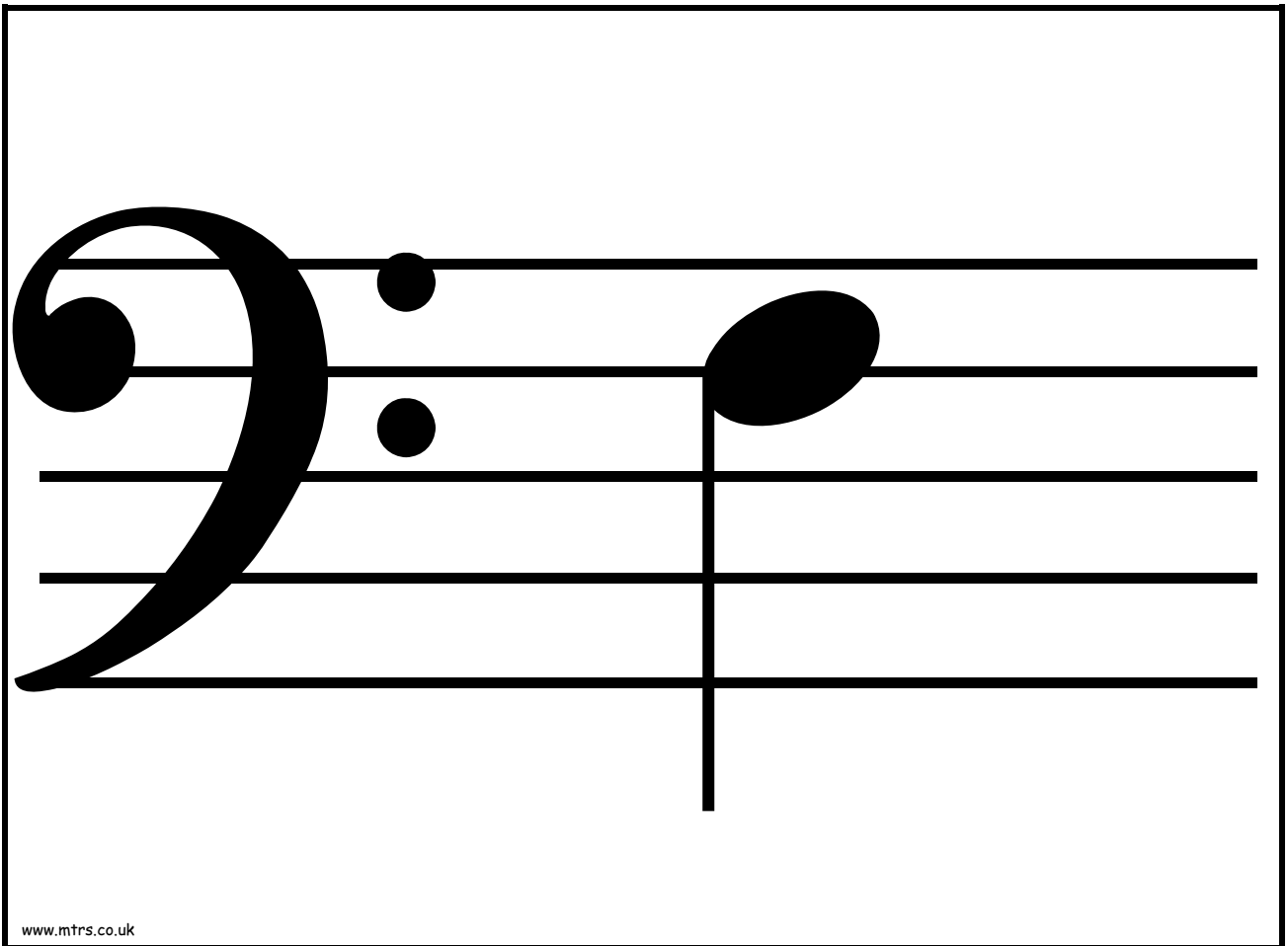
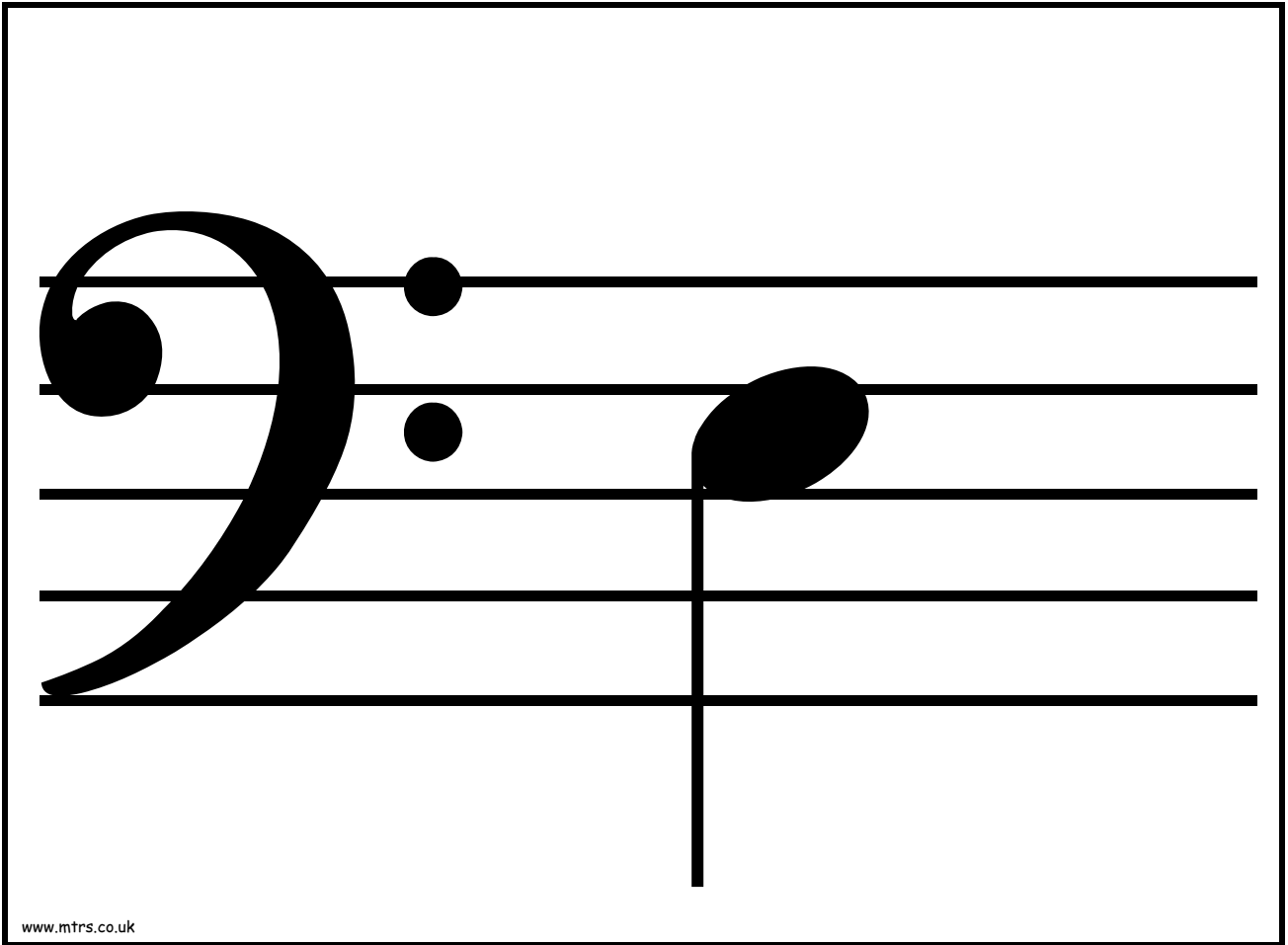
www.mtrs.co.uk

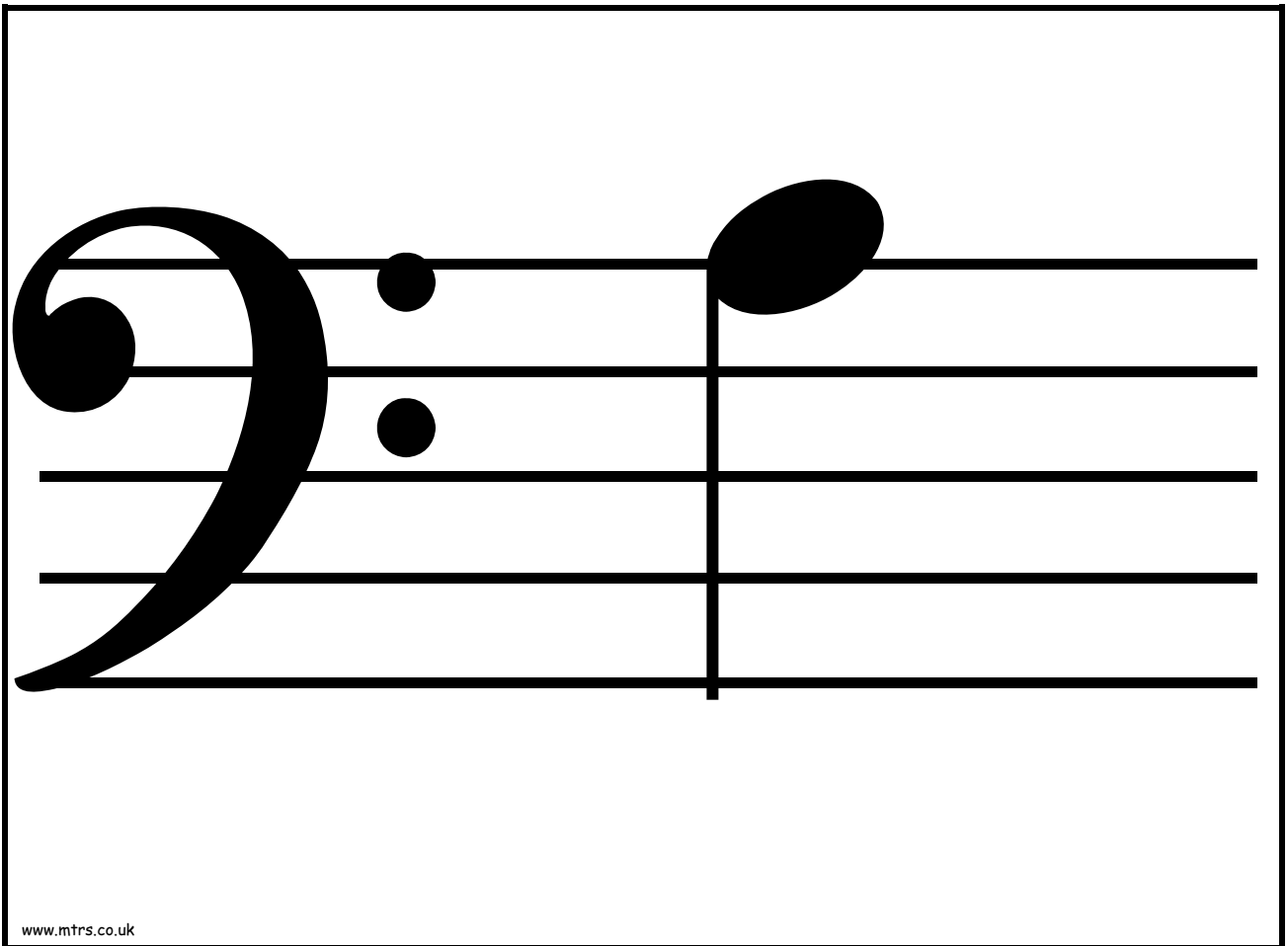
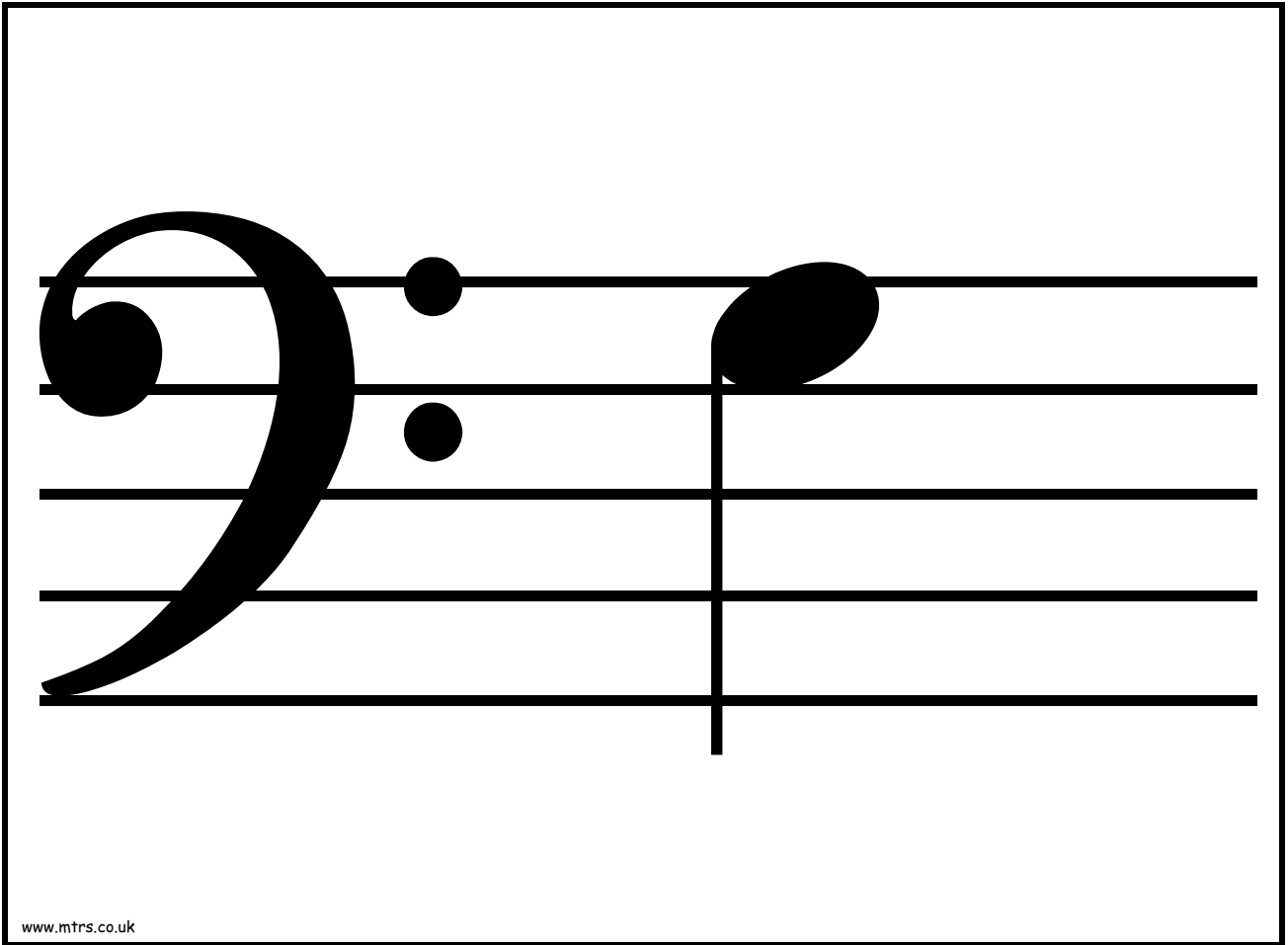
A musical staff with five horizontal lines. On the left is a large, black bass clef. To the right of the clef are two solid black dots, one on the second line from the top and one on the second line from the bottom. Further to the right is a solid black oval note with a vertical stem extending upwards from the top line.

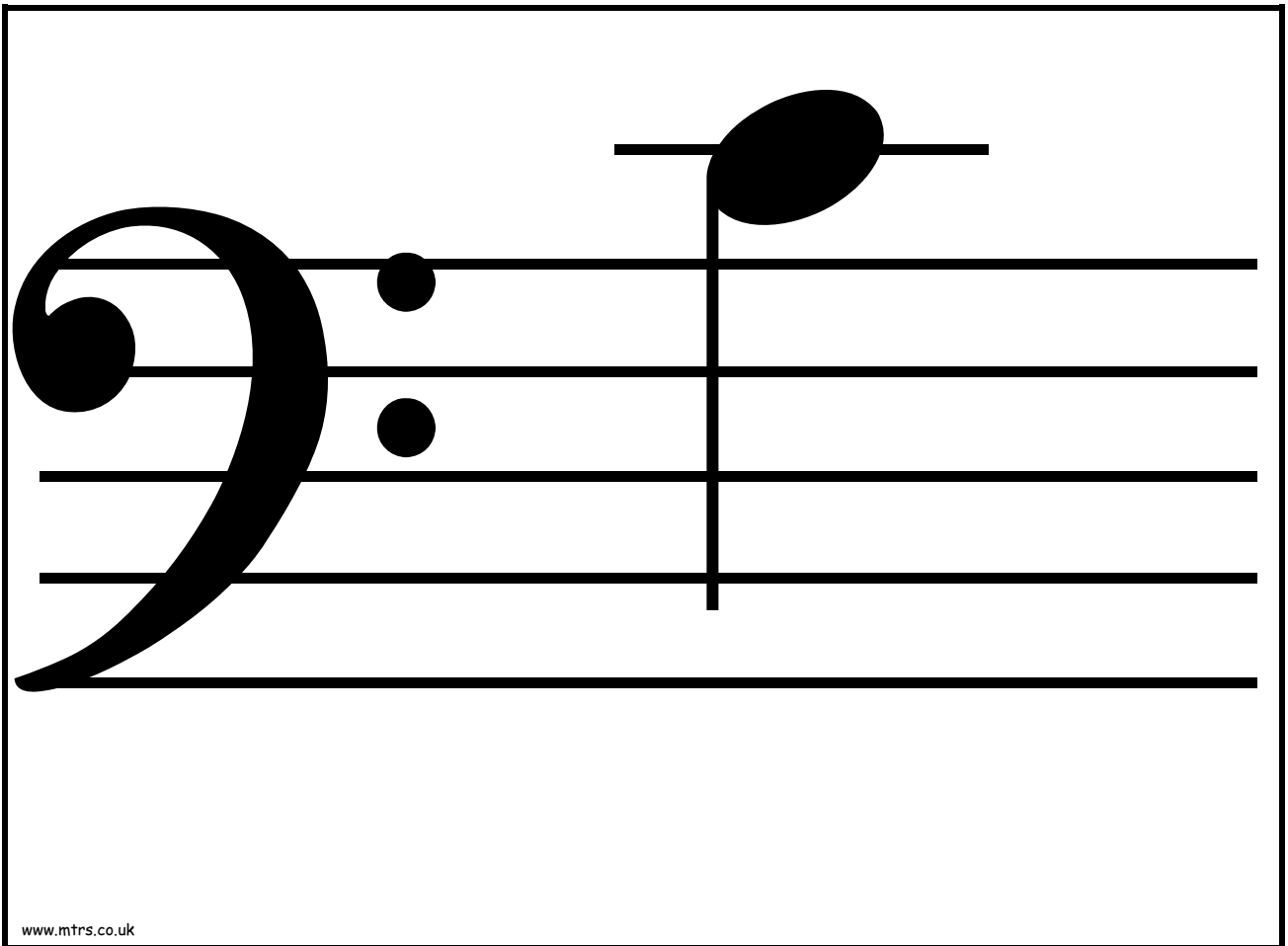
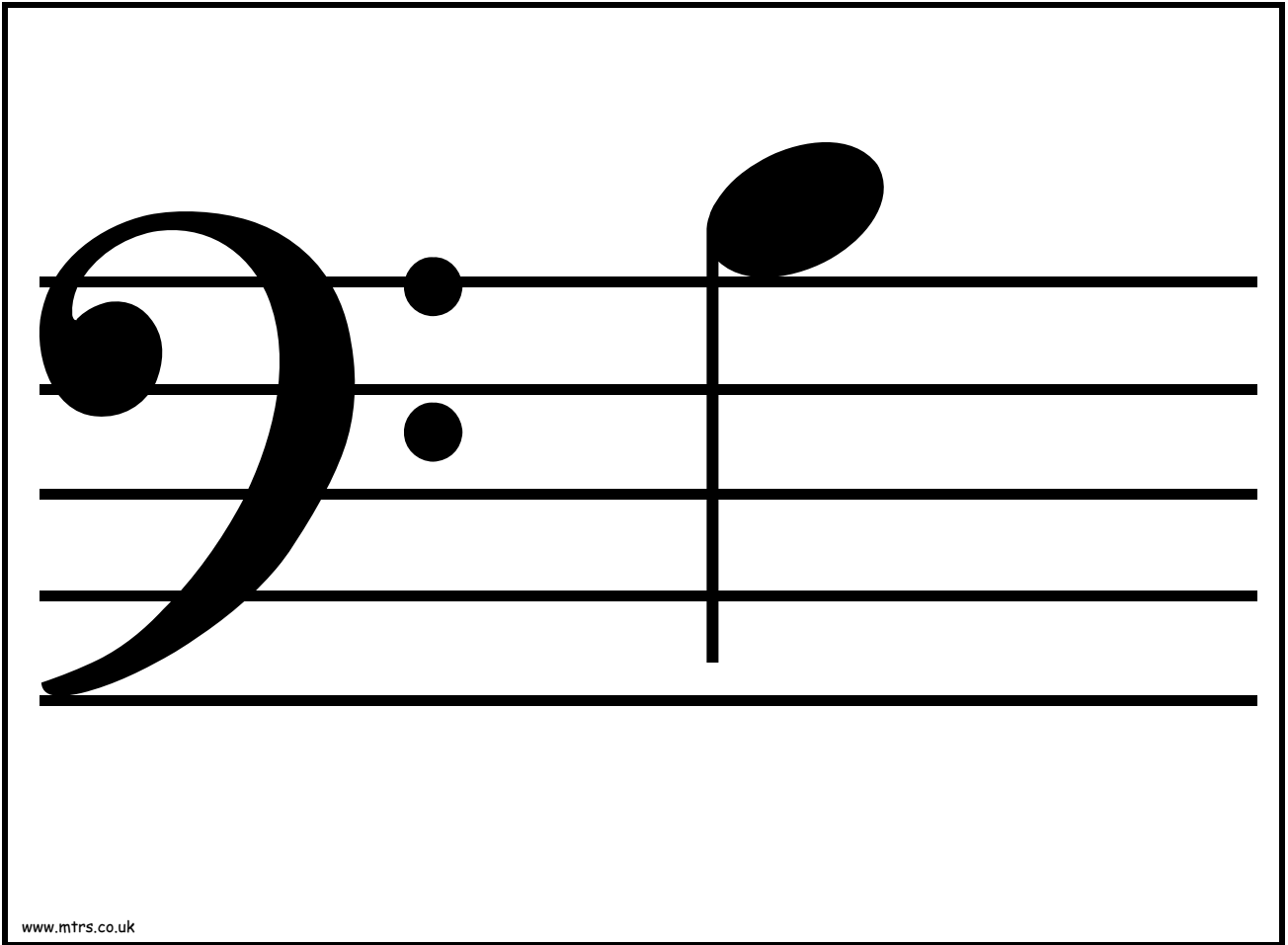
www.mtrs.co.uk

A musical staff with five horizontal lines. On the left is a large, black bass clef. To the right of the clef are two solid black dots, one on the second line from the top and one on the second line from the bottom. Further to the right is a solid black oval note with a vertical stem extending upwards from the top line.

www.mtrs.co.uk







A musical staff with five horizontal lines. On the left, there is a large, black bass clef. To the right of the clef, there are two solid black dots, one on the second line from the top and one on the third line from the top. Further to the right, a vertical stem extends from the top line down to the bottom line. At the top of this stem, there is a solid black oval note head positioned between the top line and the space above it.

www.mtrs.co.uk

A musical staff with five horizontal lines. On the left, there is a large, black bass clef. To the right of the clef, there are two solid black dots, one on the second line from the top and one on the third line from the top. Further to the right, a vertical stem extends from the top line down to the bottom line. At the top of this stem, there is a solid black oval note head positioned between the top line and the space above it.

www.mtrs.co.uk